

Crosby® Bolt Type Shackles

Load Rated

Fatigue Rated

"QT"
QUENCHED & TEMPERED

QUIC-CHECK®

MAXTOUGH®

"TA"
TYPE APPROVED

BOLT TYPE ANCHOR SHACKLES



G-2130 S-2130

Bolt Type Anchor shackles with thin head bolt - nut with cotter pin. Meets the performance requirements of Federal Specification RR-C-271D Type IVA, Grade A, Class 3, except for those provisions required of the contractor. For additional information, see page 391.

- Capacities 1/3 thru 150 metric tons.
- Working Load Limit permanently shown on every shackle.
- Forged — Quenched and Tempered, with alloy pins.
- Hot Dip galvanized or Self Colored.
- Fatigue rated (1/3t - 55t).
- Shackles 25t and larger are **RFID EQUIPPED**.
- Crosby products meet or exceed all requirements of ASME B30.26 including identification, ductility, design factor, proof load and temperature requirements. Importantly, Crosby products meet other critical performance requirements including fatigue life, impact properties and material traceability, not addressed by ASME B30.26.
- Sizes 1/2t-25t meet the performance requirements of EN13889:2003.
- Shackles 55 metric tons and smaller can be furnished proof tested with certificates to designated standards, such as ABS, DNV, Lloyds, or other certification when requested at time of order.
- Shackles 85 metric tons and larger can be provided as follows.
 - Non Destructive Tested
 - Serialized Pin and Bow
 - Material Certification (Chemical) Certification must be requested at time of order.
- Look for the Red Pin® . . . the mark of genuine Crosby quality.
- Type Approval and certification in accordance with ABS 2006 Steel Vessel Rules 1-1-17.7, and ABS Guide for Certification of Cranes.



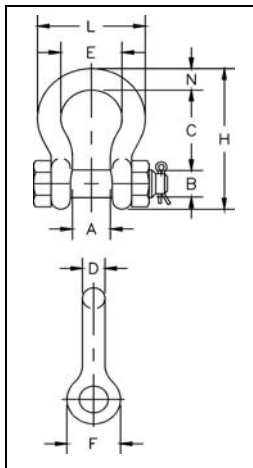
BOLT TYPE CHAIN SHACKLES



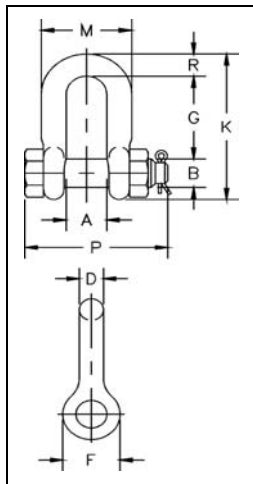
G-2150 S-2150

Bolt Type Chain shackles. Thin hex head bolt - nut with cotter pin. Meets the performance requirements of Federal Specification RR-C271D Type IVB, Grade A, Class 3, except for those provisions required of the contractors. For additional information, see page 391.

Shackles



G-2130 S-2130



G-2150 S-2150

Nominal Size (in.)	Working Load Limit (t) *	Stock No.		Weight Each (kg)	Dimensions (mm)										Tolerance +/-	
		G-2130	S-2130		A	B	C	D	E	F	H	L	N	C	A	
3/16	1/3‡	1019464	-	.03	9.65	6.35	22.4	4.85	15.2	14.2	37.3	24.9	4.85	1.50	1.50	
1/4	1/2	1019466	-	.05	11.9	7.85	28.7	6.35	19.8	15.5	46.7	32.5	6.35	1.50	1.50	
5/16	3/4	1019468	-	.10	13.5	9.65	31.0	7.85	21.3	19.1	53.0	37.3	7.85	3.30	1.50	
3/8	1	1019470	-	.15	16.8	11.2	36.6	9.65	26.2	23.1	63.0	45.2	9.65	3.30	1.50	
7/16	1-1/2	1019471	-	.22	19.1	12.7	42.9	11.2	29.5	26.9	74.0	51.5	11.2	3.30	1.50	
1/2	2	1019472	1019481	.36	20.6	16.0	47.8	12.7	33.3	30.2	83.5	58.5	12.7	3.30	1.50	
5/8	3-1/4	1019490	1019506	.62	26.9	19.1	60.5	16.0	42.9	38.1	106	74.5	17.5	6.35	1.50	
3/4	4-3/4	1019515	1019524	1.23	31.8	22.4	71.5	19.1	51.0	46.0	126	89.0	20.6	6.35	1.50	
7/8	6-1/2	1019533	1019542	1.79	36.6	25.4	84.0	22.4	58.0	53.0	148	102	24.6	6.35	1.50	
1	8-1/2	1019551	1019560	2.28	42.9	28.7	95.5	25.4	68.5	60.5	167	119	26.9	6.35	1.50	
1-1/8	9-1/2	1019579	1019588	3.75	46.0	31.8	108	28.7	74.0	68.5	190	131	31.8	6.35	1.50	
1-1/4	12	1019597	1019604	5.31	51.5	35.1	119	31.8	82.5	76.0	210	146	35.1	6.35	1.50	
1-3/8	13-1/2	1019613	1019622	7.18	57.0	38.1	133	35.1	92.0	84.0	233	162	38.1	6.35	3.30	
1-1/2	17	1019631	1019640	8.62	60.5	41.4	146	38.1	98.5	92.0	254	175	41.4	6.35	3.30	
1-3/4	25	1019659	1019668	15.4	73.0	51.0	178	44.5	127	106	313	225	57.0	6.35	3.30	
2	35	1019677	1019686	23.7	82.5	57.0	197	51.0	146	122	348	253	61.0	6.35	3.30	
2-1/2	55	1019695	1019702	44.6	105	70.0	267	66.5	184	145	453	327	79.5	6.35	6.35	
3	† 85	1019711	-	70	127	82.5	330	76.0	200	165	546	365	92.0	6.35	6.35	
3-1/2	† 120 ‡	1019739	-	120	133	95.5	372	92.0	229	203	626	419	105	6.35	6.35	
4	† 150 ‡	1019757	-	153	140	108	368	104	254	229	653	468	116	6.35	6.35	

Nominal Size (in.)	Working Load Limit (t) *	Stock No.		Weight Each (kg)	Dimensions (mm)										Tolerance +/-	
		G-2150	S-2150		A	B	D	F	G	K	M	P	R	G	A	
1/4	1/2	1019768	-	.06	11.9	7.85	6.35	15.5	19.1	40.4	24.6	39.6	6.35	1.50	1.50	
5/16	3/4	1019770	-	.10	13.5	9.65	7.85	19.1	25.4	48.5	29.5	46.2	7.85	1.50	1.50	
3/8	1	1019772	-	.15	16.8	11.2	9.65	23.1	31.0	58.5	35.8	55.0	9.65	3.30	1.50	
7/16	1-1/2	1019774	-	.22	19.1	12.7	11.2	26.9	36.1	67.5	41.1	63.5	11.2	3.30	1.50	
1/2	2	1019775	1019784	.34	20.6	16.0	12.7	30.2	41.4	77.0	46.0	71.0	12.7	3.30	1.50	
5/8	3-1/4	1019793	1019800	.67	26.9	19.1	16.0	38.1	51.0	95.5	58.5	89.5	16.0	3.30	1.50	
3/4	4-3/4	1019819	1019828	1.14	31.8	22.4	19.1	46.0	60.5	115	70.0	103	20.6	6.35	1.50	
7/8	6-1/2	1019837	1019846	1.74	36.6	25.4	22.4	53.0	71.5	135	81.0	120	24.6	6.35	1.50	
1	8-1/2	1019855	1019864	2.52	42.9	28.7	25.4	60.5	81.0	151	93.5	135	25.4	6.35	1.50	
1-1/8	9-1/2	1019873	1019882	3.45	46.0	31.8	28.7	68.5	91.0	172	103	150	31.8	6.35	1.50	
1-1/4	12	1019891	1019908	4.90	51.5	35.1	31.8	76.0	100	191	115	165	35.1	6.35	1.50	
1-3/8	13-1/2	1019917	1019926	6.24	57.0	38.1	35.1	84.0	111	210	127	183	38.1	6.35	3.30	
1-1/2	17	1019935	1019944	8.39	60.5	41.4	38.1	92.0	122	230	137	196	41.4	6.35	3.30	
1-3/4	25	1019953	1019962	14.2	73.0	51.0	44.5	106	146	279	162	230	54.0	6.35	3.30	
2	35	1019971	1019980	21.2	82.5	57.0	51.0	122	172	312	184	264	60.0	6.35	3.30	
2-1/2	55	1019999	1020004	38.6	105	70.0	66.5	145	203	377	238	344	66.5	6.35	6.35	
3	† 85	1020013	-	56	127	82.5	76.0	165	216	429	279	419	89.0	6.35	6.35	

* NOTE: Maximum Proof Load is 2.0 times the Working Load Limit. Minimum Ultimate Strength is 6 times the Working Load Limit. For Working Load Limit reduction due to side loading applications, see page 74.
 † Individually Proof Tested with certification.
 ‡ Furnished in Anchor style only and furnished with Round Head Bolts with welded handles.